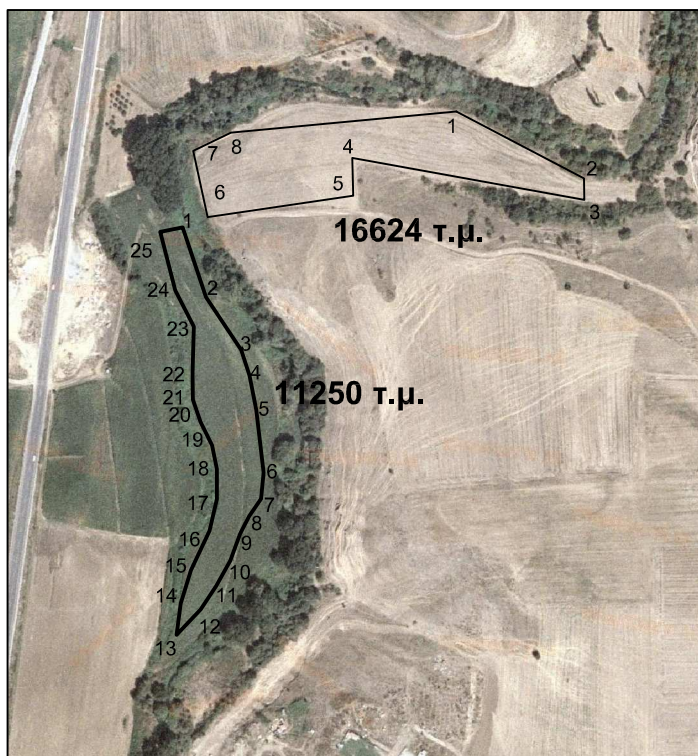


ΜΟΥΡΟΥΖΙΔΟΥ ΠΑΡΘΕΝΑ



Πίνακας Συντεταγμένων των κορυφών του 1,2,3.....
Εμβαδόν τεμαχίου = 16624 τ.μ. - Περίμετρος = 791.33 μ.

α/α	X	Y	Αποστάσεις
1	307004.31	4492501.22	----
2	307114.05	4492443.83	1 - 2: 123.84
3	307114.34	4492425.56	2 - 3: 18.27
4	306915.35	4492461.48	3 - 4: 202.21
5	306916.15	4492429.03	4 - 5: 32.46
6	306791.04	4492410.66	5 - 6: 126.45
7	306778.79	4492467.54	6 - 7: 58.18
8	306811.13	4492483.11	7 - 8: 35.89
1	307004.31	4492501.22	8 - 1: 194.03

Πίνακας Συντεταγμένων των κορυφών του 1,2,3.....
Εμβαδόν τεμαχίου = 11250 τ.μ. - Περίμετρος = 766.52 μ.

α/α	X	Y	Αποστάσεις
1	306769.82	4492402.03	----
2	306789.68	4492342.18	1 - 2: 63.06
3	306820.07	4492296.86	2 - 3: 54.56
4	306827.17	4492274.74	3 - 4: 23.23
5	306832.76	4492245.36	4 - 5: 29.91
6	306839.15	4492191.54	5 - 6: 54.20
7	306837.04	4492169.28	6 - 7: 22.36
8	306826.87	4492154.23	7 - 8: 18.17
9	306819.15	4492139.55	8 - 9: 16.59
10	306810.71	4492116.16	9 - 10: 24.87
11	306798.42	4492094.47	10 - 11: 24.93
12	306785.09	4492074.21	11 - 12: 24.25
13	306764.53	4492052.51	12 - 13: 29.90
14	306767.99	4492079.26	13 - 14: 26.97
15	306776.84	4492107.89	14 - 15: 29.97
16	306792.67	4492141.76	15 - 16: 37.38
17	306799.02	4492168.90	16 - 17: 27.87
18	306799.18	4492194.68	17 - 18: 25.79
19	306795.08	4492214.92	18 - 19: 20.65
20	306785.03	4492235.15	19 - 20: 22.59
21	306778.54	4492254.15	20 - 21: 20.07
22	306778.24	4492277.29	21 - 22: 23.15
23	306779.33	4492316.75	22 - 23: 39.47
24	306763.38	4492347.70	23 - 24: 34.81
25	306750.42	4492398.03	24 - 25: 51.98
1	306769.82	4492402.03	25 - 1: 19.80