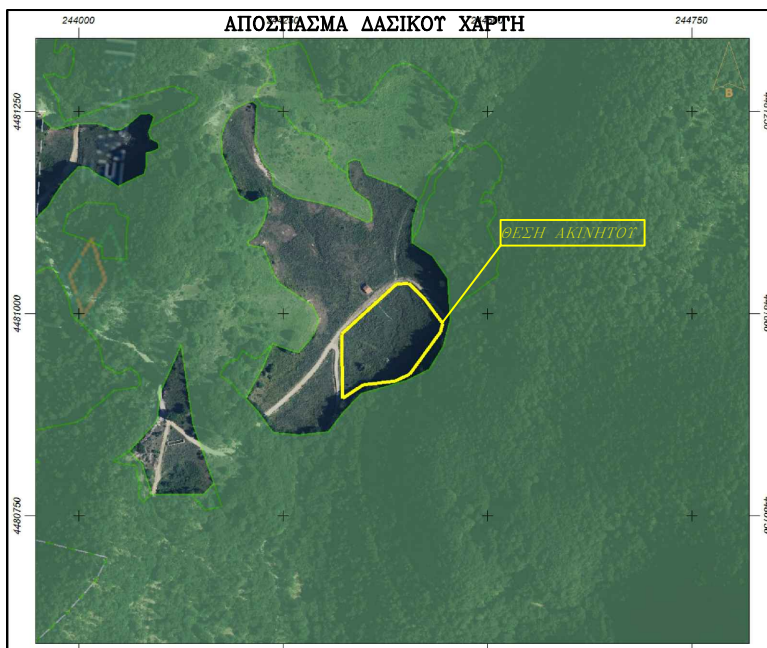


ΑΓΡΟΚΤΗΜΑ ΔΙΠΟΤΑΜΙΑΣ ΚΑΣΤΟΡΙΑΣ
 ΤΜΗΜΑ ΤΟΥ ΥΠ'ΑΡΙΘΜ.ΤΕΜΧ 1139β ΕΜΒΑΔΟΥ 27.830τ.μ.
 ΟΡΙΣΤΙΚΗΣ ΔΙΑΝΟΜΗΣ ΕΤΟΥΣ 1933
 ΑΠΟΣΠΑΣΜΑ ΟΔΟΠΟΡΙΚΟ Α/Φ ΑΠΟ ΚΤΗΜΑΤΟΛΟΓΙΟ



ΠΙΝΑΚΑΣ ΣΤ/ΝΩΝ ΚΟΡΤΦΩΝ ΓΗΠΕΔΩΤ ΣΤΟ ΕΙΔΕ Β7

α/α	X (m)	Y (m)	S (m)
A	244245.71	4481037.03	15.78
B	244237.45	4481050.48	20.48
Γ	244230.40	4481069.71	12.29
Δ	244225.84	4481081.12	18.22
Ε	244207.93	4481084.49	4.44
Ζ	244206.75	4481088.77	12.31
Η	244216.84	4481095.80	22.99
Θ	244227.51	4481116.16	16.58
Ι	244231.17	4481132.33	10.98
Κ	244229.65	4481143.20	7.97
Λ	244221.78	4481141.93	11.49
Μ	244211.58	4481136.66	17.98
Ν	244196.13	4481145.86	54.14
Ξ	244175.72	4481196.00	22.82
Ο	244174.40	4481218.78	16.82
Π	244179.33	4481234.86	20.10
Ρ	244189.44	4481252.24	19.35
Σ	244206.62	4481261.15	6.57
Τ	244213.14	4481261.99	6.65
Υ	244218.39	4481257.92	44.47
Φ	244215.70	4481213.53	28.89
Χ	244225.94	4481186.51	16.18
Ψ	244236.39	4481174.16	15.23
Ω	244238.55	4481159.08	28.34
Α1	244262.31	4481143.62	30.30
Β1	244292.03	4481137.72	18.06
Γ1	244309.56	4481133.34	14.67
Δ1	244323.40	4481128.47	11.55
Ε1	244332.92	4481121.94	10.64
Ζ1	244342.78	4481117.92	10.42
Η1	244352.09	4481113.24	6.24
Θ1	244358.12	4481114.84	10.45
Ι1	244358.96	4481125.26	13.85
Κ1	244354.71	4481138.44	23.29
Λ1	244335.89	4481152.15	16.87
Μ1	244329.09	4481167.59	5.59
Ν1	244329.11	4481173.18	13.86
Ξ1	244329.17	4481187.05	8.07
Ο1	244336.51	4481190.39	18.11
Π1	244344.46	4481189.18	15.47
Ρ1	244351.85	4481172.65	27.87
Σ1	244366.14	4481166.72	19.25
Τ1	244392.32	4481157.16	25.55
Υ1	244407.63	4481145.50	39.03
Φ1	244394.03	4481123.87	40.52
Χ1	244383.04	4481086.42	8.07
Ψ1	244384.82	4481045.95	47.70
Ω1	244378.97	4481040.38	62.91
Α2	244346.83	4481075.62	47.70
Β2	244300.35	4481033.23	13.48
Γ2	244332.49	4480997.99	78.35
Δ2	244322.83	4480988.58	74.56
Ε2	244276.11	4480925.68	5.00
Ζ2	244222.22	4480874.16	21.84
Η2	244219.27	4480878.19	14.05
Θ2	244204.59	4480894.37	31.03
Ι2	244210.91	4480906.91	28.66
Κ2	244225.76	4480934.15	2.04
Λ2	244236.48	4480960.73	15.81
Μ2	244237.95	4480962.15	16.84
Ν2	244252.77	4480956.65	20.88
Ξ2	244268.80	4480951.51	11.85
Ο2	244282.59	4480967.18	16.44
Π2	244288.87	4480977.23	17.95
Ρ2	244293.88	4480992.89	49.28
Σ2	244286.36	4481009.19	
Α	244245.71	4481037.03	

Ε = 27830.00τ.μ.